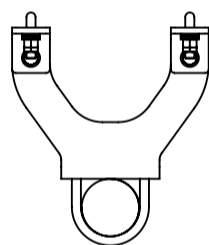
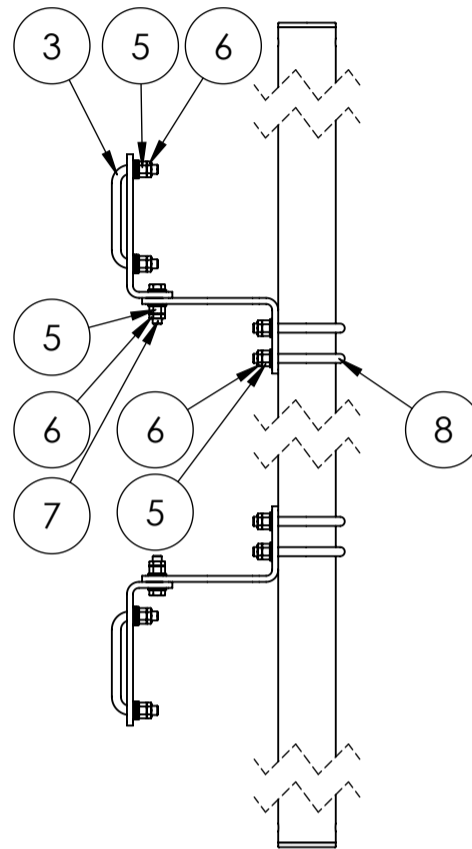
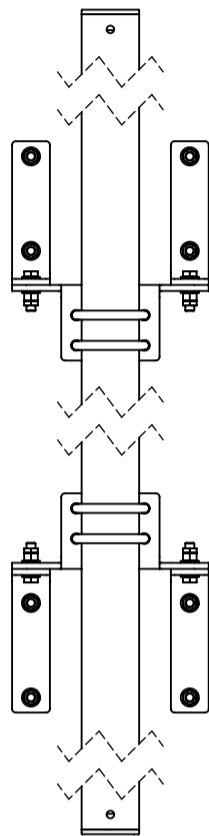
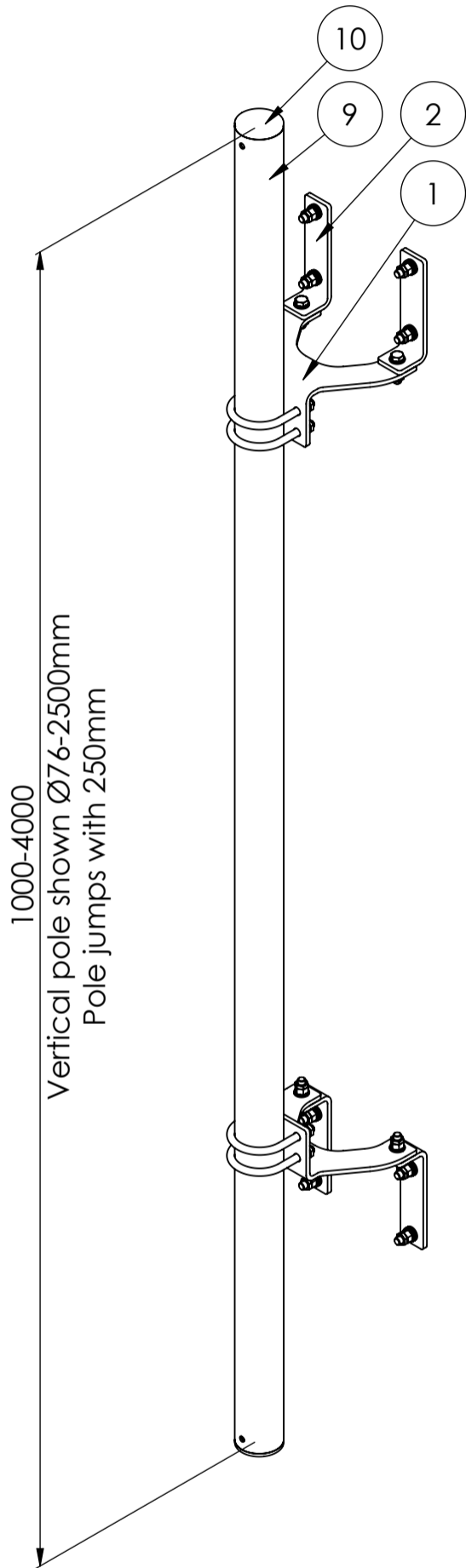
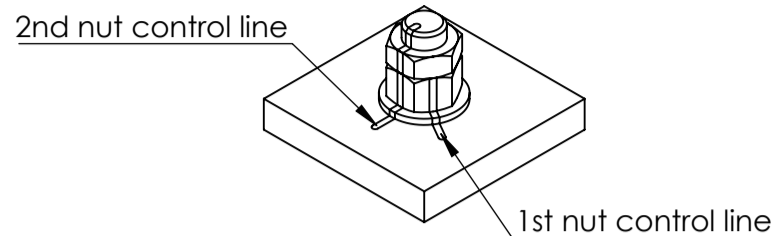


Installation:

1st nut should be spanned with 40 - 45Nm.
 2nd nut should shall be brought at least to a snug-tight condition, with special care being given to avoid over-tightening.
 Nut-marking should be made acc. to figure after torque.

Maintenance:

Visual inspection of bolt torque and any loose items is made 1 year after installation, and afterwards every 5th year.
 Check if the marking from bolt torque is still straight.
 Check if the corrosion protection system is satisfactory.
 Any findings must be repaired as soon as possible.



Basic wind $V_{b,0} = 24 \text{ m/s}$
 Terrain class TC = 2
 Max height of installation = 50m

Max loads per 1 mount pole from equipment: 150kg, $C_xA=1.6\text{m}^2$

ITEM NO.	PART NUMBER	DESCRIPTION	QTY.
1	ZVB-302	Antenna offset f. chimney with fixed brackets	2
2	ZVB-301	Antenna offset f. chimney with fixed brackets	4
3	ZVB-300	Antenna offset f. chimney with fixed brackets	4
4	Washer ISO 7089 - 12		40
5	ISO - 4032 - M12 - W - N		20
6	ISO - 4035 - M12 - N		20
7	ISO 4017 - M12 x 45-N		4
8	U-bolt M12 C-C = 90		4
9	Pole Ø76-2500	Vertical pole Ø76,1 - length: 2500	1
10	GL 76x1.6-4	tubular legs for Ø76,1	2

Rev.:	Int.:	Date:	Comment		
Customer.:					
Subjekt.:					
Date.:	24-08-2020	Production no.:	Scale.:	1:10	Format:A3
Order no.:		Calculation:	Int.:	SP/MRF	Projection:
Drawing. No.:	ZVB H200		Note.:		Tolerance: DS/EN 1090-2 DS/ISO 2768-2-L
This drawing is our property and must not be copied, transferred or in any way used by a third party without our written permission					